



1st Quarter
2010

Sage MAS 500 Newsletter

In This
Issue:

Accounts
Payable Goes
Online

eProcess
Manager

The Desktop
Gets a New
Look

Accounts Payable Goes Online

Even though consumers have enjoyed the convenience of online banking for years, many businesses have been slower to adopt the technology and still “cut checks” the old-fashioned way. But with the new ACH and Positive Pay features introduced with Sage MAS 500 Version 7.3, Accounts Payable has gone online – making it easier for you to benefit from the convenience and security of electronic banking. Let’s explore ACH and Positive Pay to help you determine whether these new features are right for your business.

What is ACH?

ACH is an acronym that stands for Automated Clearing House. The ACH network is a secure payment transfer system that connects banks all over the U.S., making it easy for them to transfer funds amongst one another while relying on a common set of standards. It represents an important link in the Electronic Funds Transfer (EFT) process that acts as a sort of escrow for payments as they await clearance for their financial banking destination.

The new ACH feature in Accounts Payable allows you to use EFT as an alternative to issuing paper checks for payment. That means paying vendors and taking advantage of early payment discounts is easier and faster than ever. Plus, you eliminate the complications and cost of:

- Processing paper checks including printing, stuffing, and mailing
- Purchasing and securing paper check stock
- Approvals and signatures that can delay paper processing

Since ACH is governed by strict rules that regulate electronic payments, you can rest assured that your electronic banking transactions are totally secure. The new ACH feature supports both the United States (NACHA) and Canadian (AFT) formats.

What is Positive Pay?

If you’re unfamiliar with Positive Pay, it’s essentially a tool for fraud prevention and security. Offered by most banks, Positive Pay is a service that matches the check number, account number, and dollar amount of each check presented for payment against a list of checks that have been previously authorized by your company. All three components of the check must match the exact details of the authorized list or the bank will not pay.

With Positive Pay in Sage MAS 500 Version 7.3, a file is generated and sent to the bank each day that checks are written. That file contains information necessary for the bank to match your authorized payments. In the event that a check is presented that does not match the list, the bank will send an image of the item to you for manual authorization to pay or return the check.

Learn More About ACH and Positive Pay



[Contact Us](#) to learn more about these exciting new features in Accounts Payable for Sage MAS 500 Version 7.3!

sage

Authorized Partner

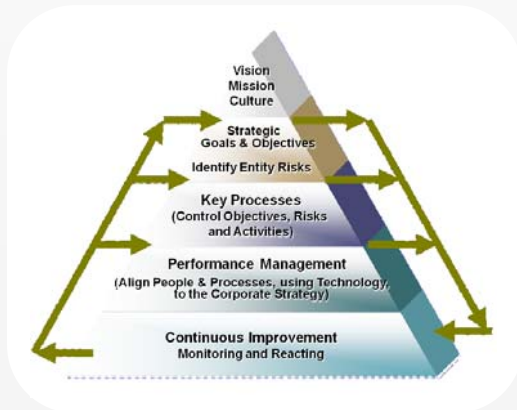
eProcess Manager

While Segregation of Duties (SOD) seems like a simple process, not properly following it can lead to disastrous consequences. Learn what can happen by reading two case studies in the article link below.

We've Got the Know-How

As CPAs and Technologists, we have the subject matter expertise to advise our Clients on how to make certain SOD matters are properly implemented within their organizations. Read the full article at the [AICPA Technology link](#) to read case studies and details on how Segregation of Duties solutions add value and strategic support to an organization.

This article is written by the President of Transition/1; a NexTec Group partner that focuses on 'operationalizing' risk management and audit solutions with database driven applications that integrate with Sage MAS 500. NexTec Group can help provide an assessment of your risk management needs, including an SOD monitoring proposal and specific road map to more valuable solutions in the mission critical areas where risks need better definition and monitoring.



eProcessManger® starts with a Risk Management Model that scales from small to large organizations, with corresponding budgets and resources. The model captures corporate vision and strategy, aligning them with: goals and objectives, key processes, performance management and continuous improvement.

And, We Also Have the Right Solution

Compelling, value-add solutions in this area are available from NexTec Group and Transition / 1 with the *eProcessManager® Suite*. The *eProcessManager® Suite* delivers a performance and risk management solution that directly integrates with your existing Sage MAS 500 solution to achieve high value and an economic return almost immediately. eProcessManager® will document, automate and report on the effectiveness of controls, process optimization and risk management which helps you reduce costs and increase assurance of operational performance.



To learn more regarding this solution and how it can benefit your organization download a copy of:

[eProcessManager® Overview Brochure.](#)

Or email marketing@nextecgroup.com with your questions about eProcess Manager.

Windows 7 Compatibility

Sage MAS 500 Version 7.3 has been formally certified by Microsoft as being compatible with Windows 7 for both 32-bit and 64-bit versions. As of this publication, Sage supports MAS 500 Version 7.3 with Product Update 1 (Dec 2009) running on Windows 7. Sage MAS 500 Version 7.2 is currently being tested and expected to be supported by Sage shortly.



The Desktop Gets a New Look

If you're feeling stressed-out over demands for greater productivity or just want to simplify your work life, then you'll love the new and improved Desktop in Sage MAS 500 Version 7.3. With improved controls for task access, more personalization options, and the familiar look of Microsoft Outlook, the new Desktop is better.

Sharpen Your Focus

How much time do you spend sifting through menus and searching through folders just to launch a specific task? How long does it take for new users to get comfortable using Sage MAS 500? Sometimes "less is more" ... and that's exactly why the new Desktop offers a cleaner layout, a familiar look, and personalization options that will eliminate the clutter (you know, tasks and folders you don't use very often) and sharpen your focus.

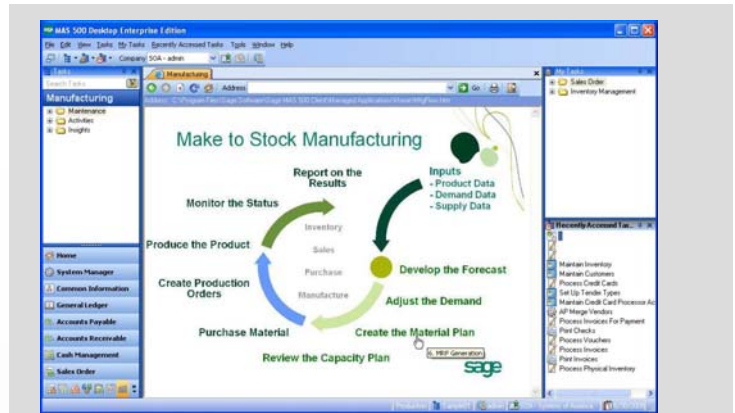
Improved Tasks Explorer Bars

The updated **Tasks Explorer Bar** offers a simpler way to navigate Sage MAS 500. Menus for modules are displayed one at a time and various Explorer styles can be accessed on the *View* menu to change what Explorer buttons do and how the menus look. You'll simplify workflow with options to hide or show groups using the Navigation Pane Options. You can even drag specific MAS 500 tasks into a separate area called **My Tasks Explorer Bar** to create a custom fit.

To round-out the Desktop's power, a new **Recently Accessed Tasks** window displays a list of the most recent tasks used and can be configured to control the number of entries displayed.

Even More Personalization

The specific role you play in your organization can be further defined by creating custom content to display for each Task Group (module) through a simple, flexible web page that defines content according to your needs. For example, this can be particularly useful in creating a workflow diagram with clickable links that launch the related task in Sage MAS 500 (see diagram). You can also customize your Desktop by



Workflow Diagrams - In this example, the "Manufacturing" Task Group has been customized to display a simple web page containing a Make to Stock Manufacturing workflow diagram. Each step shown in the diagram was created with links to launch the corresponding Sage MAS 500 task. For example, clicking on "Create the Material Plan" will conveniently launch the Sage MAS 500 MRP Generation task.

adding links to important documents and external websites which means you no longer need to open other applications or hunt for documents somewhere on your computer. They all converge on your Sage MAS 500 Desktop.

[Contact us](#), to learn more about the new MAS 500 Desktop or about any of the great new features of Version 7.3.

Upcoming NexTec MAS 500 Webcasts

[Business Insights Dashboard](#)

4/15/2010 2:00 PM (Pacific)

[Credit Card Processing](#)

5/20/2010 2:00 PM (Pacific)

[Using Positive Pay in MAS 500](#)

6/17/2010 2:00 PM (Pacific)

INNOVATIVE SOFTWARE SOLUTIONS | NATIONWIDE PRESENCE

NEXTEC GROUP OFFICES ...

Los Angeles
(310) 479-7701

Cleveland
(330) 598-2400

Pacific Northwest
(206) 505-7980

Houston
(713) 957-8350

New Jersey
(201) 933-0707

New York City
(212) 372-8999

www.nextecgroup.com

info@nextecgroup.com